

# What to look for: Trees

Most trees in Welsh woodlands are **deciduous**; they shed their leaves in winter and grow new ones in spring. Use the “**What’s That Leaf**” guide to identify the deciduous trees in your woodland, by the shape of their leaves.



## 15 minute Oak Tree Safari

The oak tree is one of the commonest trees in Welsh woodlands. Use the activities below to discover more about your local oak trees!



**Spend 5 minutes looking up into the canopy (the spreading branches) of an oak tree.** If the ground is dry, you could even lie on your back to look up!

- What can you **see**?
- What can you **hear**?
- What can you **smell**?

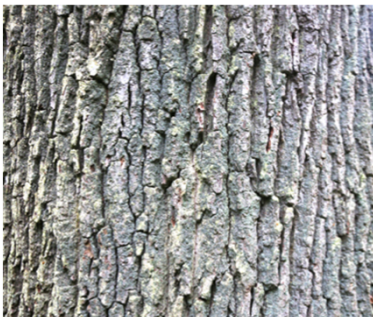
**Photo:** Many species of birds feed in the canopy of oak trees, including the lesser spotted woodpecker.



**Spend 5 minutes investigating the leaves of an oak tree.**

- What are leaves for?
- How many leaves does one oak tree have?
- What **animals** can you find living on the leaves?

**Photo:** The mammal that you are most likely to spot is the grey squirrel, but woodlands are home to many other mammal species.



**Spend 5 minutes investigating the trunk of an oak tree.**

- What is the bark for?
- What **plants, fungi or lichens** can you find growing on the bark?
- What **animals** can you find living on the bark?

**Photos:** Oak trees are home to more species of animals, plants, lichens and fungi, than any other British tree.



**Photo:** Lichens growing on an oak branch. Lichens don't like pollution, so lots of lichens are a sign of a healthy woodland

